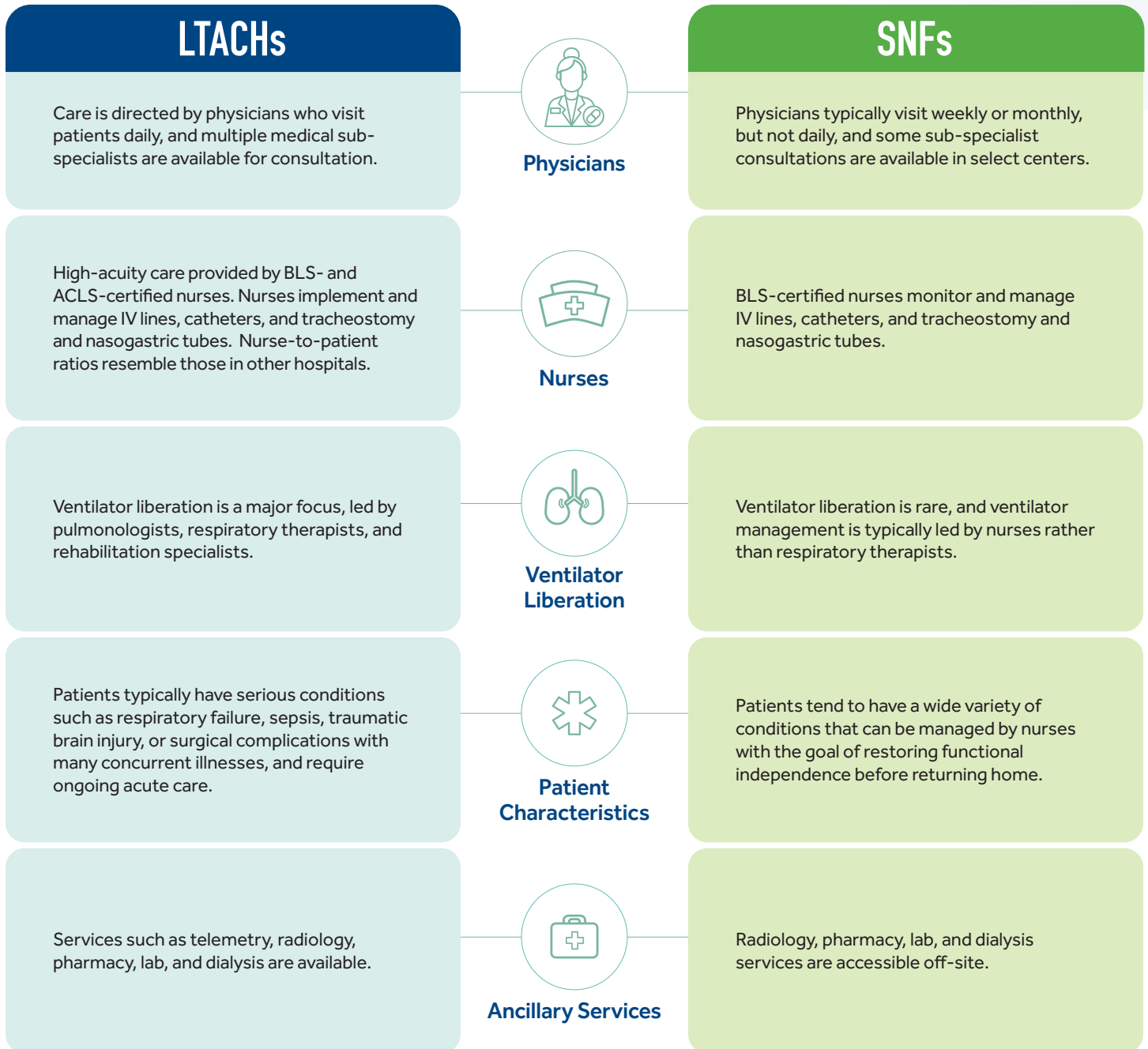


5 Setting Distinctions: LTACHs vs. SNFs

While long-term acute care hospitals (LTACHs) and skilled nursing facilities (SNFs) are often misunderstood as offering the same level of care, the unique expertise and resources available at LTACHs allow them to improve outcomes for medically complex patients. Below are 5 key differences between LTACH and SNF settings that impact medically complex patient recovery and readmission rates.



NEXT LEVEL CARE. NEXT LEVEL RECOVERY.

Kindred Hospitals, a nationwide network of long-term acute care hospitals, provide specialized treatment and rehabilitation for medically complex patients.

Learn more about how Kindred Hospitals can improve outcomes for medically complex patients at [refertokindred.com](https://www.refertokindred.com).